

SB-150M

Deep Reach Permanent Magnetic Separators



ERIEZ

Deep Reach

PERMANENT MAGNETIC SEPARATORS

Ceramic and Rare Earth Models

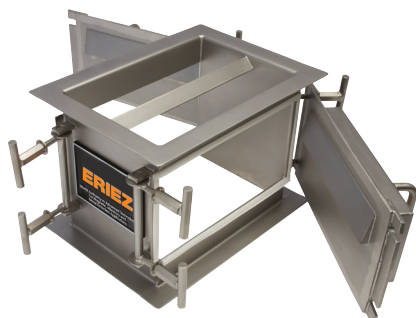
Eriez developed the permanent Deep Reach Magnetic Separator to remove tramp iron from heavy flows of materials that normally bridge or choke when processed through more traditional magnetic separators. Two powerful magnet circuits surround a chute to penetrate product flows like cocoa, powdered cheese, sugar, starch, flour, gypsum and other sticky products to remove ferrous contamination. The Deep Reach has succeeded where other separators fail to maintain production rates in handling leafy, powdery, moist, sticky or lumpy materials while improving product purity and protecting equipment and personnel.

FEATURES

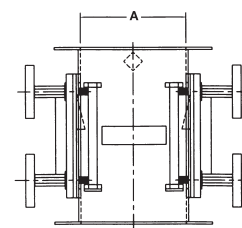
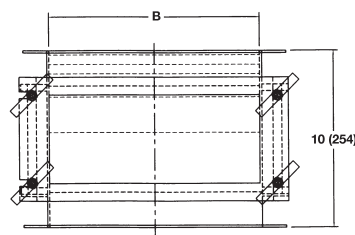
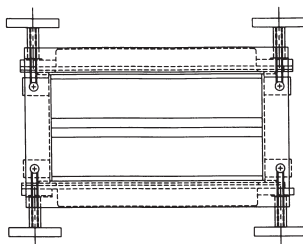
- Low profile assembly for tight spaces
- Three unique magnetic circuits penetrate product flow for optimum separation efficiency
- Xtreme™ Rare Earth magnet circuit available to remove fine or weakly magnetic contaminants
- Traditional ceramic magnet circuit removes large, chunky tramp metal
- All stainless steel construction for food application or corrosive environments
- Hinged access for easy removal of tramp metal collection



Traditional



Swing-Bolt Door



Traditional and Swing-Bolt Designs

FEATURES

- Available with Eriez exclusive Xtreme Rare Earth Plate Magnet, the strongest plate in the magnet industry
- Swing-bolt door option provides for tramp removal outside the product flow while enabling the use of Eriez exclusive milled magnetic stainless step for optimum magnetic holding force

SPECIFICATIONS

Traditional Rare Earth

Magnet Gap A		Magnet Width B		Designed for Inlet Pipe Diameter	
in	mm	in	mm	in	mm
6	152	8	203	6	152
6	152	12	305	8	203
6	152	18	457	10	254
6	152	26	660	12	305

Xtreme Rare Earth

Magnet Gap A		Magnet Width B		Designed for Inlet Pipe Diameter	
in	mm	in	mm	in	mm
6	152	8	203	6	152
8	203	8	203	8	203
8	203	12	305	10	254
8	203	18	457	12	305
8	203	24	610	14	356
8	203	32	813	16	406

Dimensions and specifications are subject to change without notice.

Manual and Automatic Easy-to-Clean Designs

FEATURES

- Center deflector ensures product is directed toward the permanent magnet face
- Easy-to-Clean drawer option available for traditional units to facilitate easy removal of accumulated tramp metal
- Eriez traditional ceramic circuit is the largest, most powerful ceramic magnet used in plate housing style assemblies
- Pneumatic cylinders for automated cleaning operation
- NEMA 12 control panel with filter regulator
- Bolt-on safety cover for drawer retraction area



Manual Easy-to-Clean Drawer

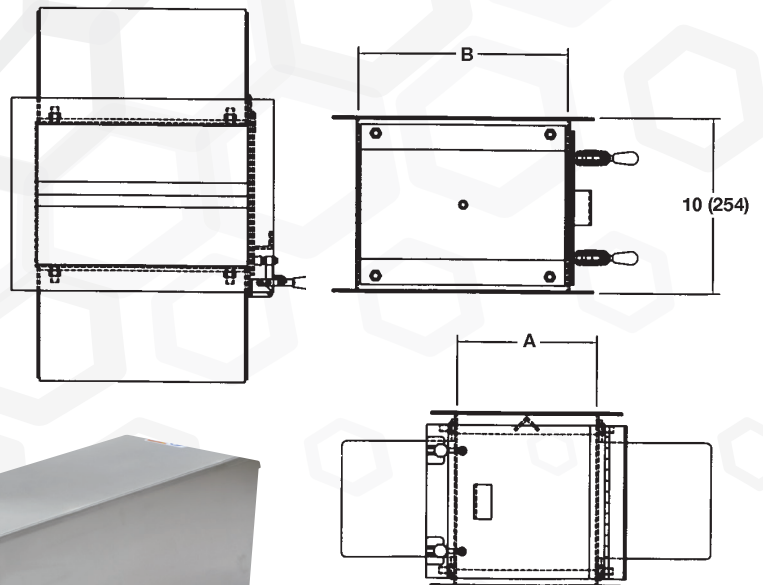


Automatic Easy-to-Clean Drawer

SPECIFICATIONS

Magnet Gap A		Magnet Width B		Designed for Inlet Pipe Diameter	
in	mm	in	mm	in	mm
6	152	8	203	6	152
8	203	8	203	8	203
8	203	12	305	10	254
8	203	18	457	12	305
8	203	24	610	14	356
8	203	32	813	16	406

Dimensions and specifications are subject to change without notice.





ERIEZ

GLOBAL LEADER IN SEPARATION TECHNOLOGIES

HEADQUARTERS

2200 Asbury Road • Erie, PA 16506-1402 U.S.A.
1-814-835-6000 • eriez@eriez.com • www.eriez.com



AUSTRALIA

Epping, Victoria
+61 3 8401 7400



BRAZIL

Belo Horizonte, Minas Gerais
55 31 3281 9108



CANADA

Delta, British Columbia
+1 604-952-2300



CHILE

Las Condes, Santiago
56 2 29523400



CHINA

Qinhuangdao and Tianjin
86-22-8390-4608



GERMANY

Recklinghausen
+49 (0)160 94179313



INDIA

Athipet, Chennai
91-044-2652-5000



JAPAN

Urayasu, Chiba
+81-47-354-6381



MEXICO

Querétaro, Tlalnepantla
52 555 321 9800



PERÚ

Surco, Lima
51 1 719 4150



SOUTH AFRICA

Boksburg, Gauteng
27-11-444-9160



UNITED KINGDOM

Bedwas, Caerphilly
44-29-2086-8501



UNITED STATES

Erie, Pennsylvania
1-814-835-6000



Note: Some safety warning labels or guarding may have been removed before photographing this equipment.
Eriez, Eriez Flotation and Eriez Magnetics are registered trademarks of Eriez Manufacturing Co, Erie, PA